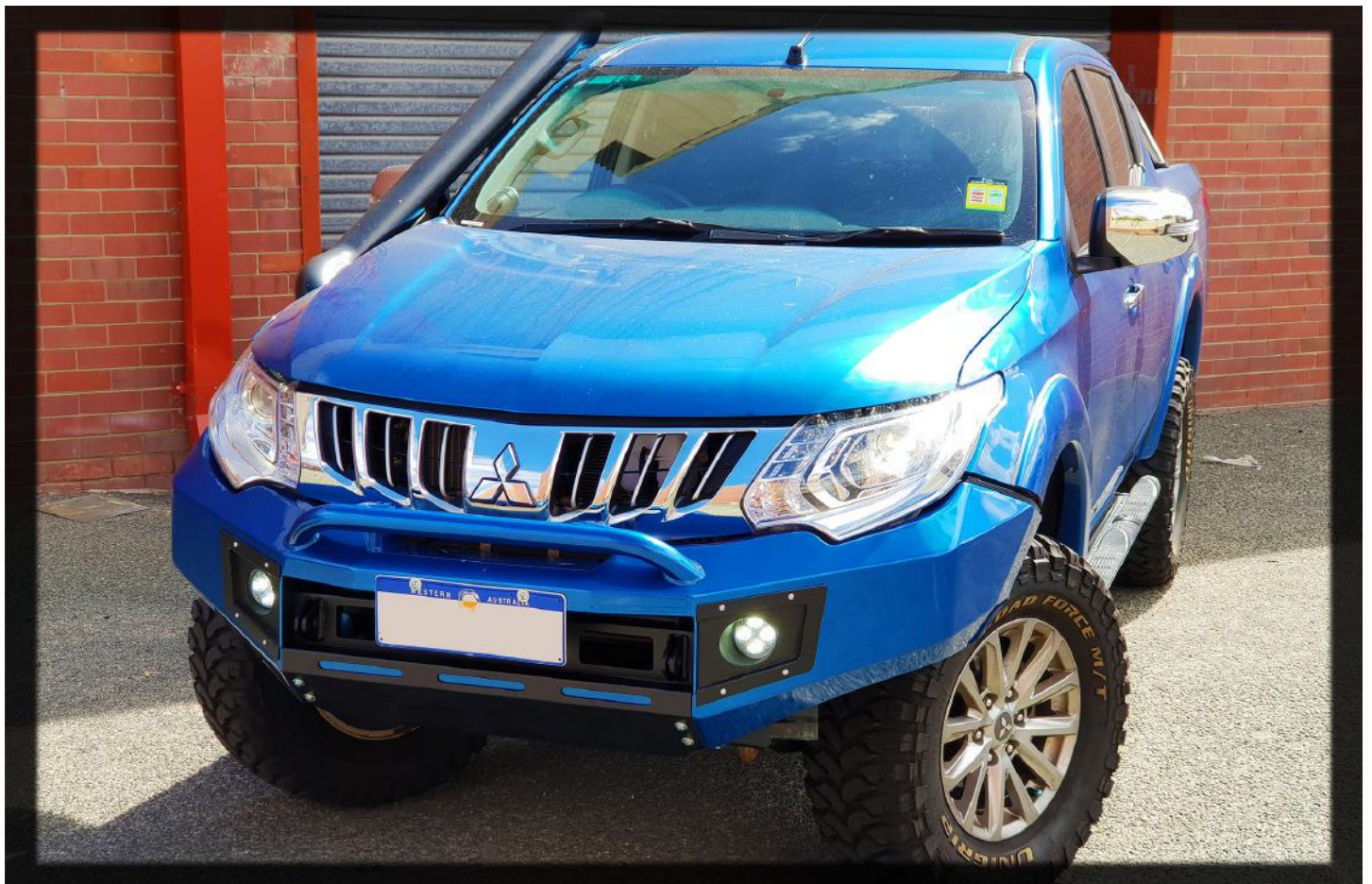




Extreme Series Bullbar X-1



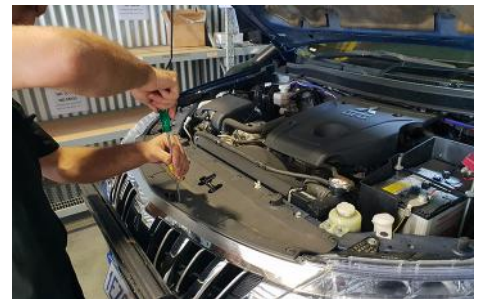
Fitting instructions for Mitsubishi MQ Triton

Front TOW points only - Rated to 3.75T - NOT FOR SNATCHING

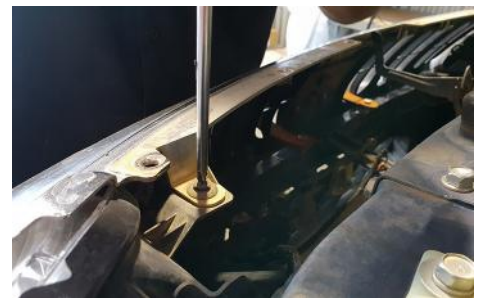
1. Congratulations on purchasing your very own 4x4 Extreme Series Bullbar. To start, clear an area around the front of your car and unwrap the bar.



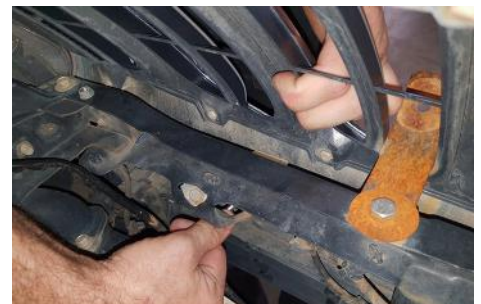
2. Remove the top clips holding the grill cover. Take care as these are quite brittle.



3. With the grill cover removed, you can remove the two screws holding the top of the grill to the radiator support.



4. Carefully pop the grill away where it meets the bumper. This can take a bit of force.

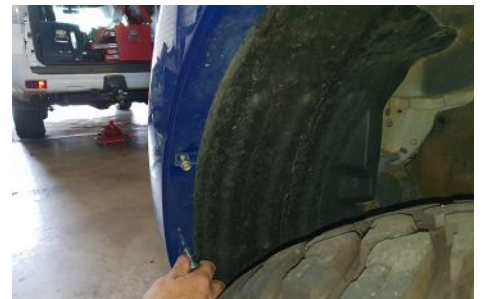


◆ **LEGEND EX** ◆

5. Next, remove the bolts securing the top of the bumper that are now visible with the grill removed.



6. Undo the bolts holding the inner wheel liner to the bumper.



7. Carefully pop the flares away from the bumper. These will be trimmed later on.



8. With the bolts removed, pull the bumper off of the Triton, remembering to disconnect the fog light wiring.



◆ **LEGENDEX** ◆

9. Carefully trim the air damsto sit flush with the intercooler piping.



10. Unbolt and dispose of the metal bracket as shown.



11. With the bolts and washers prefitted, slide and mount the adaptor brackets to the chassis as shown.

Updated Design- You cut the end of front rec tube off after the end of the bracket, also helps you slide on.



12. Now mount the winch cradle to the bolts in the adaptor brackets. You will need a long spanner to hold the bolt head while you tighten the lock nuts from the front.



◆ **LEGEND EX** ◆

13. Unscrew and remove the plastic trim under the headlights as shown.



14. Remove the factory washer bottle located under the passenger side headlights. You will be left with the wiring and the water hose loose as seen in the photo.



15. Mount the new washer bottle bracket as shown. The bracket fits between the bonnet stop and the bonnet stay clip.



16. Route the wiring and water hose to the new washer bottle. You may need to extend the water hose using the supplied clear tubing.



◆ **LEGEND EX** ◆

17. Cut and solder new wires to the factory washer motor wiring as an extension. Fit blade crimps to the end ready to connect to the new pump. NOTE: Green is the positive wire in the factory wiring.



18. Trim the inner wheel liner as shown, following the angle of the metal.



19. Mark and trim the flares to match the quarter panel.



20. With a helper, mount the bar to the bracket, taking your time to ensure the bar is level.

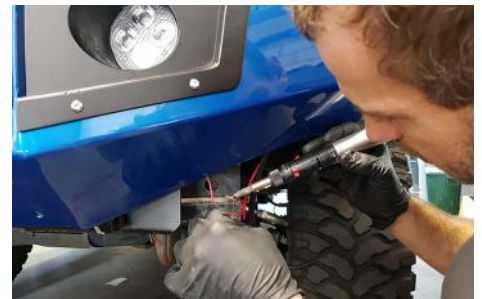


◆ **LEGEND EX** ◆

21. The bar should have about a 10mm gap between the headlights and the bar itself.



22. Solder the LED fog lights into the factory wiring.



23. With the bar mounted, ensure that there isn't any stress on the washer bottle hose or wiring and tidy with cable ties.



24. Refit the grill in the reverse order.



◆ **LEGEND EX** ◆

25. Mount the supplied bash plate using the supplied hardware for the front and the factory bolts to secure the rear.



26. Finally, trim the grill cover to access the replacement window washer tank and you're done!



◆ **LEGENDEX** ◆